

Your Community Mental Health Program Director*

The CMHP Director is appointed by you, the Local Mental Health Authority. In addition to other duties, your Director will ensure:

- Planning and budgeting for the local service delivery system with the input of local stakeholders.
- Programs evaluation using uniform data collection.
- Service quality and safety by conducting regular site and records reviews.
- Designation of Diversion Coordinator to work with the criminal justice system and health care delivery system to screen defendants who would be suitable for jail diversion, coordinate the formulation of individual diversion plans, and report defendant performance to the court.
- Assignment and transportation of civilly-committed persons to appropriate facilities.

Local Planning Committees**

Every Local Mental Health Authority is required by statute to have a Local Alcohol & Drug Planning Committee and a Mental Health Planning Committee; committee members are appointed by and serve at the pleasure of the Local Mental Health Authority (County Board of Commissioners or Tribal Council).

Their statutory charge is to:

- Advise the Local Mental Health Authority on local needs and systems planning.
- Review local applications for state grants.
- Create a plan in cooperation with local justice and corrections leaders for the integration of drug treatment services into the criminal justice system.
The plan is submitted to the Department of Human Services, copied to county commissioners, and incorporated into the local commission on children and families local coordinated comprehensive plan.

* ORS Chapter 426.233, 426.237, 430.665, 430.490

** ORS, Chapter 430.342, 430.420, 417.775



Association of Oregon Community Mental Health Programs

Mission and Vision

The Association assures that state policy and funding recognize and support local mental health authorities, which are responsible for the development and management of publicly-funded systems of care for people with mental illness, addictions, and developmental disabilities.

AOCMHP is the unified voice of local governments, which are accountable for the well-being of people with mental illness, addictions and developmental disabilities.

"In Josephine County, we have learned firsthand that our local authority ensures a level of accountability for our local consumers that you just can't get from Salem."

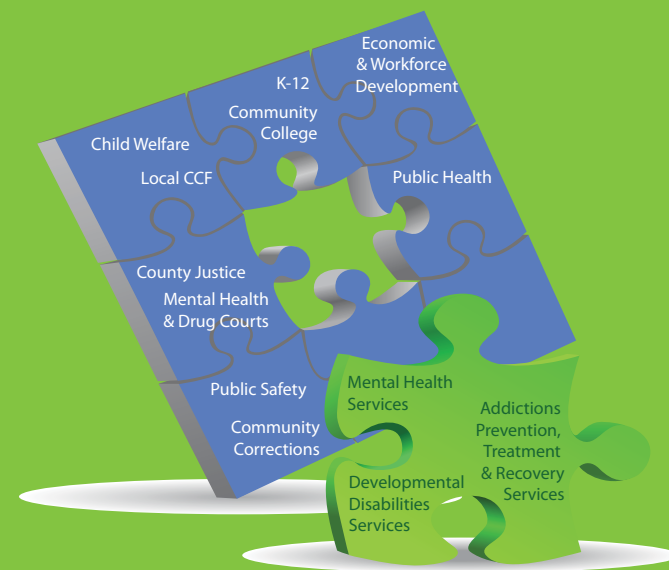
-Commissioner Dave Toler

Gina Nikkel, Ph.D., Executive Director
Diana Bronson, Executive Assistant
Bobby Green, Sr., Legislative Liaison
Morgan Cowling, Legislative Consultant
Gordon Fultz, Legislative Consultant
Jessica van Diepen, Data & Communications
Crucita White, Peer Support Specialist

**Association of Oregon
Community Mental Health Programs**
1201 Court Street NE, Suite 201
Salem, Oregon 97301
(503) 399-7201
(503) 589-3103 fax

www.aocmhp.org

YOU are the LOCAL MENTAL HEALTH AUTHORITY



Community mental health, addictions and developmental disabilities services in Oregon are proven to increase employment and success in school while reducing homelessness, the number of children in foster care and the number of adults involved with local courts and jails.

(Addictions & Mental Health Division, Outcome Data, Spring 2007)

Commissioner “To Do” List*

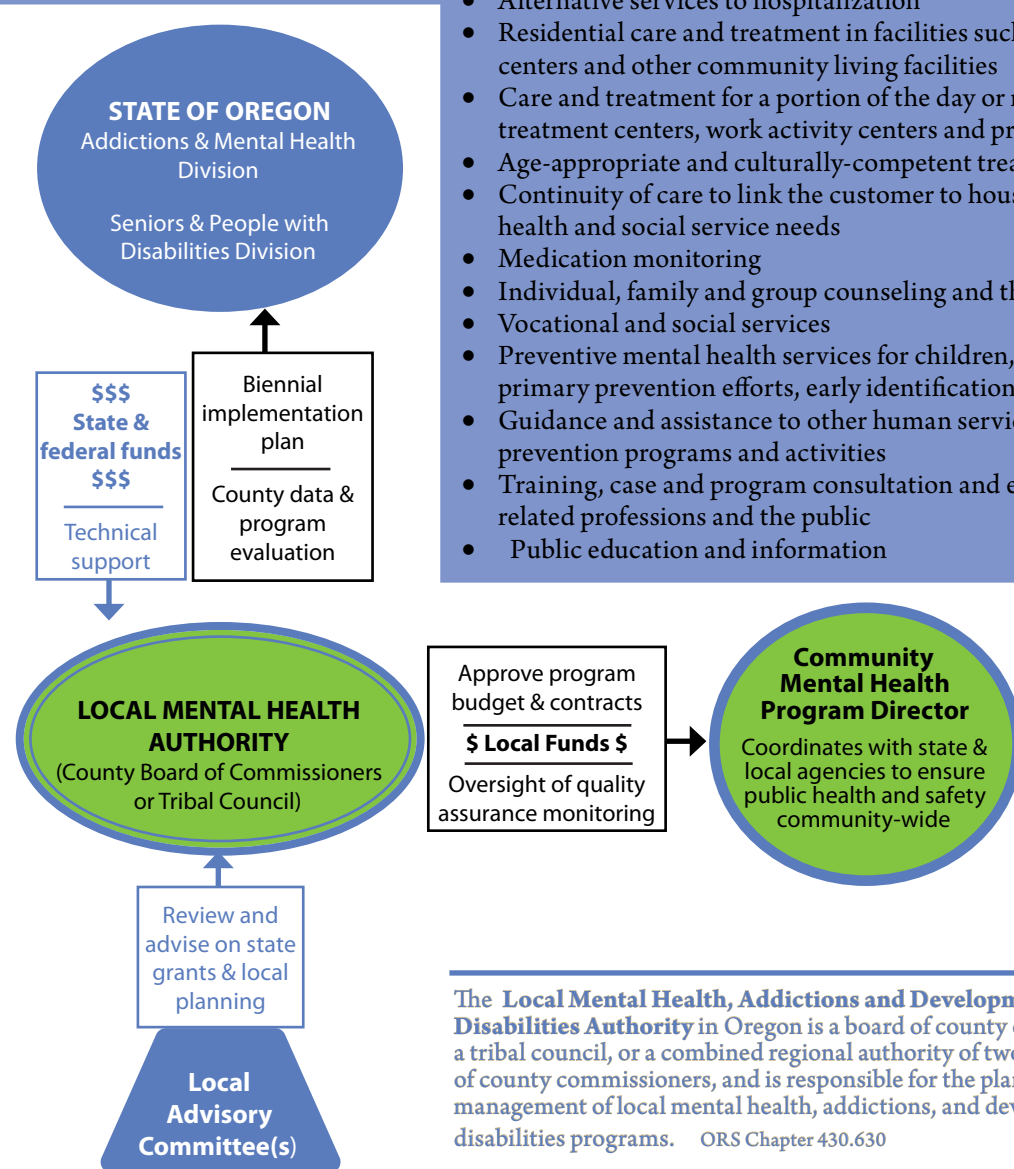
- ✓ Appoint membership to your standing Local Alcohol & Drug and Mental Health Planning Committee(s).
- ✓ Approve & submit a biennial implementation plan to the state in the spring of each even-numbered year.
- ✓ Administer state pass-through dollars for addictions, mental health and developmental disabilities services within the county or tribal budget; approve the state-county services contracts at the start of each biennium.
- ✓ Organize your Community Mental Health Program as either a county/tribal-operated agency or through contracts with private service providers.
- ✓ Ensure quality assurance monitoring.
- ✓ Ensure the coordination of community mental health, addictions and developmental disabilities services with other local agencies, governments, and organizations to ensure program efficiency & effectiveness. These local partners include schools, police and sheriffs, local courts and corrections, child protective services, local private service providers and philanthropies.
- ✓ Review and provide commentary to DHS on all public expenditures for community mental health, addictions and developmental disabilities services within your county, tribe or region.

*Oregon Revised Statute, Chapter 430.342, 430.630, 430.380, 430.620, 430.665, 430.640.

Note: While the Board or Council bears the ultimate responsibility, some of the tasks listed above can be delegated to county or tribal administrators and program directors.

Components of a Community Mental Health Program: Basic services and alternatives to hospitalization for people needing **addictions, mental health and developmental disabilities** services (ORS 430.630 (1)-(3))

- 24-hour crisis services
- Screening and evaluation, outpatient services & service coordination for continuity of care
- Involuntary commitment investigation, including treatment and prehearing detention in community hospitals or other facilities
- Inpatient treatment in state and community hospitals and aftercare for persons released from hospitals
- Alternative services to hospitalization
- Residential care and treatment in facilities such as halfway houses, detoxification centers and other community living facilities
- Care and treatment for a portion of the day or night, which may include day treatment centers, work activity centers and preschool programs
- Age-appropriate and culturally-competent treatment options
- Continuity of care to link the customer to housing and appropriate and available health and social service needs
- Medication monitoring
- Individual, family and group counseling and therapy
- Vocational and social services
- Preventive mental health services for children, adolescents, and adults, including primary prevention efforts, early identification and early intervention services
- Guidance and assistance to other human service agencies for joint development of prevention programs and activities
- Training, case and program consultation and education for community agencies, related professions and the public
- Public education and information



The Local Mental Health, Addictions and Developmental Disabilities Authority in Oregon is a board of county commissioners, a tribal council, or a combined regional authority of two or more boards of county commissioners, and is responsible for the planning and management of local mental health, addictions, and developmental disabilities programs. ORS Chapter 430.630